



# FLASH

for 

## GAIN AGILITY

### No more impact on IBM i production

for backups, SAVE21, recovery copies, analytics, data extraction, test environments generation

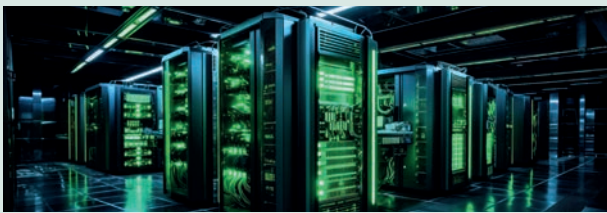
**Already 600+ installed systems**



#### DON'T STOP PRODUCTION FOR BACKUP TASKS

► Exhaustive, 100% reliable, and more frequent backups compatible with continuous access to Prod

- Instant daily backups (including Save 21).
- Use of existing software (including BRMS).
- Prod restrictions reduced to less than 2 minutes (in 90% of cases).
- Low disk capacity use\*.



#### DATA COPIES MADE BEFORE AND AFTER CRITICAL BATCHES

► System snapshots for more agile debugging (or rollbacks)

- Scheduled N times per day or on demand.
- Possibility of debugging on clones of the initial clones.



#### YOUR TEST OR ACCEPTANCE DATA UPDATED AT A GLANCE

► Create multiple environments, with up-to-date and secure data, by a simple IBM i command

- Test, Qualification, Pre-Prod,... partition's data updated on the fly.
- 100% Prod-independent, sanctuarized (DevOps).
- Actual data from Prod, refreshed in just a few minutes.
- Anonymization of this data made simple (RGPD).



#### A PROD RELIEVED OF HEAVY REQUESTS

► Run your SQL and Queries from the 'clone' partition

- Or feed your datawarehouse from this partition.
- Advantage: data is frozen at cloning T time.



#### FAST RESTART AFTER DATA CORRUPTION (malware, bug, mistake or false manipulation)

► N snapshots of your disks, captured throughout the day, accessible for inspection and reloading of safe, pre-incident data

- Several copies per day of your Prod\* disks: the copies will be more recent than your cartridge backups and potentially unaltered, unlike replicated copies with HA solutions ...
- Restored or 'reloaded' in just a few minutes.

#### THE STRENGTHS OF FLASH for i



- Controls your external storage array's disk cloning functionality
- Launched from the IBM i PROD partition
- Clones use very little disk space
- "Plug & Play» product: quick and easy to install
- Easy to use: optimal automation
- Robust and stable: 600+ installations worldwide
- Feature-rich: 8 years' experience with ~3 releases per year to keep pace with customer needs and technological developments
- Users-praised hotline
- 2 modes: Perpetual licenses or Subscription

\* In the greatest number of use cases, cloned disks only require 5 to 15% of the original disk space.



**Introducing M81: Software house (ISV) specializing in IBM i. It offers 2 solutions: Flash for i: see above & Control for i: 180 IBM i Plug & Play controls added to your company's monitoring tool. 600+ companies rely on M81 products installed on 1000+ LPARs in 23 countries (Europe & Americas).**